



**INTEGRATED WAREHOUSE
RACKING + FORKLIFT SOLUTIONS**



REACH FORKLIFTS SMRT20L

ELECTRIC REACH TRUCK 2.0T

SMRT20L ELECTRIC REACH TRUCK 2.0T

Designed for optimal visibility, and precise operation with high stability, and easy, enjoyable operator experience.

Featuring Li-ion Technology for opportunity charging.

LI-ION
TECHNOLOGY

REACH FORKLIFTS

BIG JOE SMRT20L

ELECTRIC REACH TRUCK 2.0T

STANDARD EQUIPMENT

- ↳ Maintenance-free 48V/360Ah Li-Ion battery
- ↳ 150A Integrated charger
- ↳ 20KW lifting
- ↳ AC motor
- ↳ Electric power steering
- ↳ Upgraded hydraulic pumps
- ↳ 6000K LED lights
- ↳ Mechanical fork height indicator
- ↳ Full colour operator display



PRECISE OPERATION

EASY AND PRECISE OPERATIONS

SMRT20L is equipped with a mechanical height indicator, that tells operators the correct height of the fork at various rack levels for precise operations to improve the stacking efficiency.



6000K LED LIGHT

SMRT20L is equipped with 6000K led lights to cope with the dark environment for optimal visibility.

HIGH STABILITY

The low center of gravity and the newly I-beam mast design enhance the truck stability. The maximum lifting height of SMRT20L is 12000 mm.

PERFORMANCE SPECIFICATIONS

CAPACITY

2000kg

BATTERY

360Ah Li-Ion Battery
150A Charger

SPEED

Lifting speed: 550mm/s
Driving speed: 9.3km/h

TYRES

Polyurethane:
Tyre size, front: Φ 343×140mm
Tyre size, rear: Φ 310×118mm

ENJOYABLE LIFTING OPERATIONS

SMRT20L offers powerful performance and quiet operations through the upgraded hydraulic pumps and powerful lifting motors. (20 kw for SMRT20L.) The upgraded technology greatly boosts stacking efficiency by 50%, reduces operational noise by 10dB and the energy consumption by 30%.



LIFTING MOTOR POWER
20KW

STACKING EFFICIENCY
50%

OPTIMAL VISIBILITY

A much more compact Li-Ion battery comes with better visibility for SMRT20L. Along with the offset layout of the oil tubes, SMRT20L stacking visibility and operation flexibility are greatly improved.



ELECTRIC POWER STEERING

SMRT20L comes with full AC motors and electric power steering system that consumes less power compared to hydraulic power steering while keeps operation habits of trucks with mechanical steering through the additional damping force. So SMRT20L gives more working hours than ones with hydraulic power steering.



FULL COLOUR DISPLAY



ELECTRIC POWER STEERING

FULL-COLOR DISPLAY

SMRT20L is designed with a color display to help operators easily monitor battery charge level, driving speed, and check error codes.

STANDARD LI-ION TECHNOLOGY.

SMRT20L is powered by a maintenance-free 48V/360Ah Li-Ion battery. With opportunity charging, Li-Ion batteries deliver all-day running performance. The BMS incorporates CAN-bus to monitor and control the battery's charging, discharging, and temperature.

LI-ION
TECHNOLOGY



134 234

issequipment.com.au

ELECTRIC REACH TRUCK 2.0T SMRT20L

Distinguishing mark

| | | | | |
|-----|--|---|----|----------|
| 1.1 | Manufacturer | | | Big Joe |
| 1.2 | Model designation | | | SMRT20L |
| 1.3 | Drive unit | | | Electric |
| 1.4 | Operator type | | | Seated |
| 1.5 | Rated capacity | Q | kg | 2000 |
| 1.6 | Load center distance | c | mm | 600 |
| 1.8 | Load distance centre of drive axle to fork | x | mm | 377 |
| 1.9 | Wheelbase | y | mm | 1515 |

Service weight

| | | | | |
|-------|--|--|----|-----------|
| 2.1 | Service weight | | kg | 3510 ① |
| 2.3.1 | Axle loading, unladen front/rear | | kg | 2210/1320 |
| 2.4.1 | Axle loading, fork advanced, laden front/rear | | kg | 470/5060 |
| 2.5.1 | Axle loading, fork retracted, laden front/rear | | kg | 1870/3620 |

Tyres/chassis

| | | | | |
|-------|--|-----|----|--------------|
| 3.1 | Tyre type | | | Polyurethane |
| 3.2.1 | Tyre size, front | | mm | ∅ 343×140 |
| 3.3.1 | Tyre size, rear | | mm | ∅ 310×118 |
| 3.4 | Additional wheels | | mm | ∅ 102×51 |
| 3.5.1 | Wheels, number front/rear (x=drive wheels) | | mm | 1x/2 |
| 3.6 | Tread, front | b10 | mm | -- |
| 3.7 | Tread, rear | b11 | mm | 1148 |

Dimensions

| | | | | |
|--------|--|----------------|----|-------------|
| 4.1 | Tilt of mast/fork carriage forward/backward | α/β | ° | 2/4 |
| 4.2 | Height, mast lowered | h1 | mm | 3219 ② |
| 4.3 | Free lift | h2 | mm | 1712 ② |
| 4.4 | Lift height | h3 | mm | 7500 ② |
| 4.5 | Height, mast extended | h4 | mm | 8565 ② |
| 4.7 | Height of overhead/ guard cabin | h6 | mm | 2213 |
| 4.8 | Seat height/standing height | h7 | mm | 1076 |
| 4.10 | Height of wheel arms | h8 | mm | 333 |
| 4.19 | Overall length | l1 | mm | 2463 |
| 4.20 | Length to face of forks | l2 | mm | 1393 |
| 4.21 | Overall width | b1/b2 | mm | 1260/1270 |
| 4.22 | Fork dimensions | s/e/l | mm | 40/120/1070 |
| 4.23 | A,B Fork carriage class/type A, B | | | 2A |
| 4.24 | Fork carriage width | b3 | mm | 990 |
| 4.25 | Distance between fork-arms | b5 | mm | 240-770 |
| 4.26 | Distance between wheel arms/loading surfaces | b4 | mm | 915 |
| 4.28 | Reach distance | l4 | mm | 585 |
| 4.31 | Ground clearance, laden, below mast | m1 | mm | 60 |
| 4.32 | Ground clearance, center of wheelbase | m2 | mm | 75 |
| 4.34.1 | Aisle width for pallets 1000×1200 crossways | Ast | mm | 2835 |
| 4.34.2 | Aisle width for pallets 800×1200 crossways | Ast | mm | 2885 |
| 4.35 | Turning radius | Wa | mm | 1770 |
| 4.37 | Length across wheel arms | l7 | mm | 1948 |

Performance data

| | | | | |
|------|----------------------------------|--|------|-----------------|
| 5.1 | Travel speed, laden/unladen | | km/h | 10/11 |
| 5.2 | Lifting speed, laden/unladen | | m/s | 0.38/0.55 |
| 5.3 | Lowering speed, laden/unladen | | m/s | 0.41/0.38 |
| 5.4 | Reaching speed, laden /unladen | | m/s | 0.18/0.18 |
| 5.8 | Max. gradeability, laden/unladen | | % | 10/15 |
| 5.10 | Service brake | | | Electromagnetic |
| 5.11 | Parking brake | | | Electromagnetic |

Electric-engine

| | | | | |
|-----|----------------------------------|--|------|--------|
| 6.1 | Drive motor rating S2 60 min | | kW | 7 |
| 6.2 | Lift motor rating at S3 15% | | kW | 20 |
| 6.4 | Battery voltage/nominal capacity | | V/Ah | 48/360 |
| 6.5 | Battery weight | | kg | 350 |

Additional data

| | | | | |
|------|--|--|-------|------------|
| 8.1 | Type of drive unit | | | AC |
| 10.5 | Steering design | | | Electronic |
| 10.7 | Sound pressure level at the driver's ear | | dB(A) | 75 |

If there are improvements of technical parameters or configurations, no further notice will be given.
The diagram shown may contain non-standard configurations.

① Service weight (include battery)

| Mast height (mm) | Service weight (kg) | Mast height (mm) | Service weight (kg) |
|------------------|---------------------|------------------|---------------------|
| 2-stage mast | | 3-stage mast | |
| 2700 | 2847 | 4050 | 3138 |
| 3000 | 2872 | 4500 | 3180 |
| 3300 | 2896 | 5000 | 3223 |
| 3640 | 2924 | 5500 | 3271 |
| 4000 | 2953 | 6000 | 3320 |
| 4300 | 2977 | 6500 | 3363 |
| 4520 | 3005 | 7000 | 3479 |
| 5000 | 3044 | 7500 | 3510 |
| 5480 | 3086 | 8000 | 3569 |
| 6000 | 3143 | 8500 | 3629 |
| -- | -- | 9000 | 3688 |
| -- | -- | 9500 | 3736 |
| -- | -- | 10000 | 3850 |
| -- | -- | 10500 | 3898 |
| -- | -- | 11000 | 3944 |
| -- | -- | 11500 | 3991 |
| -- | -- | 12000 | 4037 |

② Mast

| Mast types | Lift height (h3) mm | Height, Mast | | | Height, Free lift (h2) | |
|------------------------|------------------------|---------------------------------|----------------------------|---------------------|------------------------|-------------------|
| | | Height, mast lowered (h1) mm | Height, mast extended (h4) | | With backrest mm | No backrest mm |
| | | | No backrest mm | With backrest mm | | |
| 2-Standard Mast | 2700 | 1980 | 3280 | 3765 | 120 | 120 |
| | 3000 | 2130 | 3580 | 4065 | 120 | 120 |
| | 3300 | 2280 | 3880 | 4365 | 120 | 120 |
| | 3640 | 2450 | 4220 | 4705 | 120 | 120 |
| | 4000 | 2630 | 4580 | 5065 | 120 | 120 |
| | 4300 | 2780 | 4880 | 5365 | 120 | 120 |
| 3-Free Mast | 4050 | 1999 | 5113 | 5115 | 522 | 522 |
| | 4500 | 2149 | 5563 | 5565 | 672 | 672 |
| | 5000 | 2299 | 6063 | 6065 | 772 | 772 |
| | 5500 | 2469 | 6563 | 6565 | 952 | 952 |
| | 6000 | 2649 | 7063 | 7065 | 1172 | 1172 |
| | 6500 | 2799 | 7563 | 7565 | 1272 | 1272 |
| | 7000 | 3049 | 8063 | 8065 | 1532 | 1532 |
| | 7500 | 3219 | 8563 | 8565 | 1712 | 1712 |
| | 8000 | 3389 | 9063 | 9065 | 1852 | 1852 |
| | 8500 | 3609 | 9563 | 9565 | 2072 | 2072 |
| | 9000 | 3769 | 10063 | 10065 | 2212 | 2212 |
| | 9500 | 3939 | 10563 | 10565 | 2392 | 2392 |
| | 10000 | 4159 | 11063 | 11065 | 2612 | 2612 |
| | 10500 | 4329 | 11563 | 11565 | 2792 | 2792 |
| | 11000 | 4489 | 12063 | 12065 | 2932 | 2932 |
| 11500 | 4659 | 12563 | 12565 | 3112 | 3112 | |
| 12000 | 4819 | 13063 | 13065 | 3252 | 3252 | |

Add your Operators' comfort and work satisfaction to the power and performance endurance of LI-ION Technology with this ergonomic Sit-Down High Reach forklift.

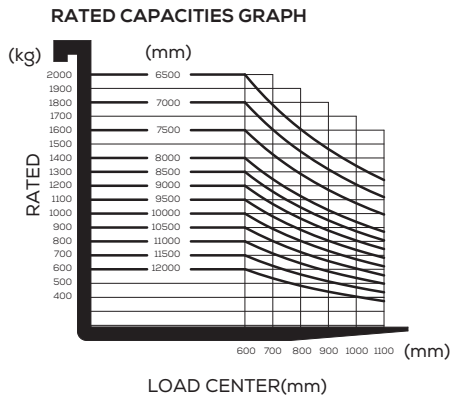
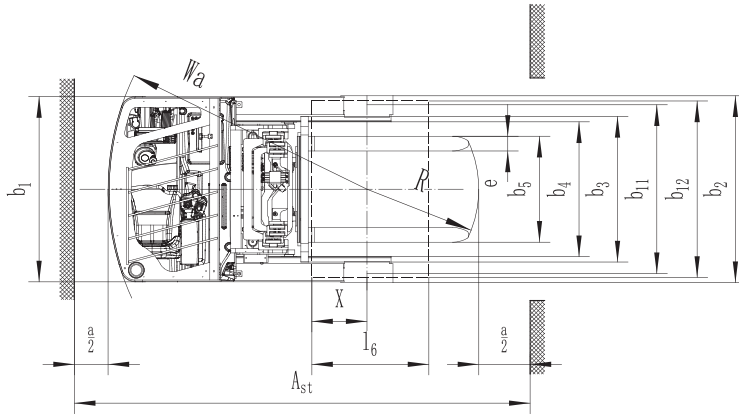
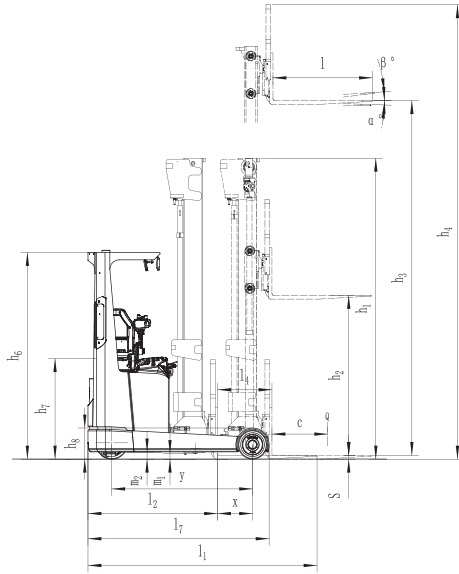


Talk to us about a Demo and Fast Delivery.



DIMENSIONS

BIG JOE SMRT20L | ELECTRIC REACH TRUCK 2.0T



Full range of options

| Optional items | | SMRT20L |
|----------------|---------------------------------|---|
| 1.1 | Fork dimension | ○ 1000*600, 2A, 122*40*920 1000*600, 2A, 122*40*1070 |
| | | ○ 1000*600, 2A, 122*40*1150 1000*600, 2A, 122*40*1220 |
| | | ○ 1000*600, 2A, 122*40*1370, 1000*600, 2A, 122*40*1500 |
| | | ○ 1000*600, 2A, 122*40*1600 |
| | | |
| 1.2 | Leg width | ●917 |
| 1.4 | Fork carriage width | ●770mm |
| 1.5 | backrest height | ●1025mm |
| 2.1 | Load wheel type | ●Single |
| 2.2 | Load wheel material | ●PU |
| 2.3 | Drive wheel material | ●PU |
| 2.7 | Battery capacity | ●360Ah-Li |
| 2.8 | Charger | ●48V-150A: Li External ○48V-200A: Li External |
| | | |
| 2.10 | Seat type | ●Suspension |
| 2.11 | Attachments | ●Built-in sideshifter |
| 3.3 | Castor wheels | ●Yes and not customised |
| 3.4 | Water auto-filling system | ●No ○Yes and not customised |
| 3.5 | Front lamp | ●LED |
| 3.6 | Rear lamp | ●No ○LED |
| 3.7 | Warning lamp | ●Yes and not customised |
| 3.9 | Blue lamp | ●No ○Yes and not customised |
| 3.10 | Area warning lamp | ●No ○Yes and not customised |
| 3.11 | Rearview mirror | ●Yes and not customised |
| 3.12 | Buzzer | ●No ○Yes and not customised |
| 3.13 | Height display | ●Yes and not customised (only for 3-stage mast) |
| 3.14 | Camera | ●No ○Yes and not customised |
| 3.15 | Fire extinguisher | ●No ○Yes and not customised |
| 3.17 | OPS system | ●Yes and not customised |
| 3.23 | Telematics | ●No ○Yes and not customised |
| 4.2 | Cold storage | ●No ○Yes and not customised |
| 4.5 | Proportional lift system | ●Yes and not customised |
| 4.6 | Forks tilt forward and backward | ●Yes and not customised |
| | | |
| 4.7 | Overhead guard | ●Yes and not customised |
| 4.8 | Drive assembly | ●ZK25 - GK25 |

Note: ●Standard ○Optional - Inconformity



INTEGRATED WAREHOUSE RACKING + FORKLIFT SOLUTIONS

Transforming the way smart companies add efficiency to their warehousing and logistics operations.

134 234

sales@issequipment.com.au

issequipment.com.au

17 Marconi Drive, South Dandenong VIC. 3175